

Black Hawk College
Figge Art Museum College Invitational 2021
Artist Statements

Annabelle Bishop

Senior, Alleman High School

Water Lily, 2020

Hand-built high fire stoneware and mixed media

7" w x 7" d x 5"h

I was inspired by one of my favorite flowers, the water lily. I used this inspiration to form the box because I wanted it to look calm and serene, like a water lily floating in a pond. The rounded corners and lack of sharp edges exemplify the tranquil feel of *Water Lily*. I realized while creating this that it might be a self-portrait. I feel like the water lily, very quiet, taking everything in, and at my own pace.



Karissa Collis

Sophomore

Coastal Quartet, 2019

Hand-built high fire stoneware

Approximately 10.5" h

My favorite art pieces are the ones that happen through mistakes. Originally, I planned to create a single lidded box. This box, however, was not intended to look like the one you see. After three failed attempts to create a lid that fits, I designed a new one that I was able to form to my box. However, I wanted to somehow repurpose the three failed lids I had created. Thus, my ceramic set was formed.



Jae Corales

Sophomore

Mangaliw Kayo?/Do you Wanna Buy?, 2019

Marker on paper

38" w x 50"h (framed)

Most artwork I make is digital work. I am so fascinated by thousands of pixels that can form an image. The idea behind my work is to form an image using small pixels using primary colors: red, blue, yellow and, of course, black and white.

I grew up in the Philippines, where many make their livelihood working in fisheries. Many children help their parents with this work. In this piece, you can see a child who's trying to sell the fish he caught. This piece is basically an image of what life in the Philippines looks like. Poverty is a common enemy of Filipinos.



Kaylee Hanger

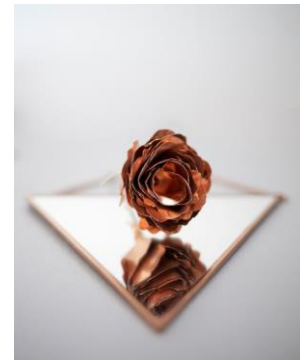
Sophomore

The Enchanted Rose, 2020

Archival photographic print

16" w x 20" h

This photograph was captured to express the feeling of a real-life fairytale. I chose objects with a story symbolizing nature and positioned them reaching towards the viewer, leading them into the frame. Using a soft focus and diffused light to illuminate the mirror, the rose has an illusion of glowing. My image reflects on imagination and the need to get lost in a story from time to time.



Eric January

Sophomore

The Queen and Kathleen, 2019

Acrylic on canvas

36" w x 48" h

Kathleen Cleaver (left) and Beyoncé (right) are both powerful black women from the state of Texas, where I was born. Kathleen, a prominent Black Panther in the 1960s had her ideals classified as “radical” and was labeled a “Black Identity Extremist,” along with the rest of the Panthers by the FBI. Beyoncé shares many of the same beliefs, but is largely heralded today, while Kathleen was shot at and spit on. Does the role of celebrity make one’s beliefs valid? Does the lack of color in images from the past make us ignorant that this time period was recent?



Abigail Kongkousonh

Sophomore

Hineni, 2020

Acrylic on canvas

28" w x 40" h

This self-portrait is an exploration into my identity and an expression of my faith. *Hineni* translates to *here I am* in Hebrew. Not only is that a statement of fact, but it also serves as a prayer and a devotion from me to God. This piece was a large leap for me, a student artist, to create during the current pandemic; however, my artistic voice is stronger because of it.



Lisbet Salazar

Tenochtitlan, 2020

India ink on paper

Diptypch, 14" w x 11"h each (framed)

Driven out of Aztlan, the Mexica were ordered by Huitzilopochtli, the sun and war god, to find a golden eagle perched on a prickly pear cactus, devouring a snake. Huitzilopochtli told them that the eagle would be a sign that they had reached the land where they could settle permanently.

When they found this eagle, the Mexica began building The Great Pyramid of Tenochtitlán, a city that grew to be the largest and most powerful of Mesoamerica. This legend inspired the design for the coat of arms of Mexico, and it was also what inspired me to create this piece.

